

ELIGIBILITY + REQUIREMENTS

The show is open to all artists and includes a non-juried youth division (ages 14 and under). Download the youth application at GVAL.org.

Original artwork in 2- or 3-dimensions in any media. Submitted artwork must have been created within the past 2 years. GVAL reserves the right to refuse any/all art submitted.

Maximum framed size is 36" on any side.

Art accepted in previous GVAL Annual Fine Art Shows is not eligible.

2-dimensional artwork must be framed or gallery wrapped with no visible staples and wired to hang. (Sawtooth hangers will not be accepted.)

3-dimensional works must be able to stand on their own or hang in a safe manner.

Work must be available for exhibition. Once selected, no substitutions will be accepted. Artwork must remain on display for the term of the exhibit.

Artists and their guests are encouraged to attend the reception on November 12. Awards and ribbons will be presented at the reception.

Art must be picked-up on November 20, between 4 and 5 p.m. Please make appropriate arrangements if you can not pick up your own artwork.

FINE ART SHOW

The Gilbert Visual Art League (GVAL) invites you to enter the 7th annual, Fine Art Show

LOCATION + AWARDS

The Gilbert Historical Museum

Gilbert, Arizona
(Southwest corner of Gilbert + Elliot Roads)

November 6 to 20, 2010

Ribbons and cash prizes will be awarded in several categories including Best of Show and Peoples Choice. The Peoples Choice award will not be presented until the close of the show.

.....
GVAL is supported in part by a grant from the Town of Gilbert.

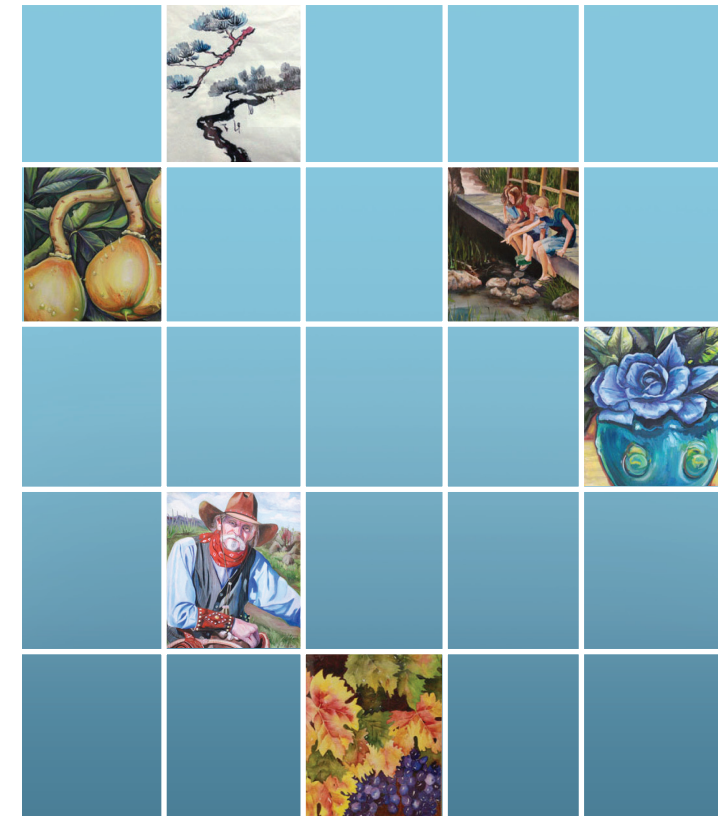
Gilbert Visual Arts League
PO Box 2651
Gilbert AZ 85299-2651

GILBERT VISUAL ART LEAGUE

FINE ART SHOW

8th JURIED

CALL FOR ENTRY



IMPORTANT DATES

October 1, 2010

Deadline for entry
(Entries must be postmarked by this date.)

October 15, 2010

Acceptance notification begins

November 5, 2010 (Friday)

Art drop off from 4 to 6 p.m.

November 6, 2010 (Saturday)

Show opens

November 12, 2010 (Friday)

Reception from 6 to 7:30 p.m.

November 20, 2010 (Saturday)

Show closes

Art pick up between 4 and 5 p.m.
(GVAL is not responsible for art not picked up at this time.)

JOIN GVAL

If you want to join the Gilbert Visual Art League, you may include the additional \$25 membership dues with your submission materials. Joining GVAL allows you to take advantage of the \$10 per piece member entry fee.

For more information call
Jean Turner-Smith at 480.497.0677
or online at www.GVAL.org.

HOW TO SUBMIT

1. Complete the form at the right and be sure to sign it. If a piece is not for sale, list NFS in the price field. Include the title of piece, framed size (width and height), and medium for each image.
2. For each piece submitted, please include a non-refundable entry fee of \$20. The entry fee is \$10 per piece for GVAL members. Make checks payable to GVAL.
3. Submit a JPG for each piece that is a maximum size of 72-DPI and 10" x 6" via email or on one PC compatible CD. Each image must be labeled with the title of the piece. **Do not include images that are not being submitted for consideration. Slides or printed images will not be accepted. CDs will not be returned to the artists.**
4. Please include a self-addressed, stamped envelope for notification of acceptance.
5. Mail entry form, CD, return envelope, and entry fee to:

Gilbert Visual Art League
PO Box 2651
Gilbert, AZ 85299-2651

Email JPGs to: GilbertArt@USA.com

*All artists who are accepted into the show are requested to sit with the art at least once during the time the museum is open, Tuesday through Saturday. Each day is broken into two shifts: 9 a.m. to 12:30 p.m. and 12:30 p.m. to 4 p.m.

There is an additional fee of \$10 if an artist is not able to sit with the art. Entrants should indicate their availability on the entry form.

CALL FOR ENTRY

Each artist may submit up to three entries. Please print legibly in the space provided.

Name

Phone

Email

Address

City

State

Zip

Title

Price

Width

Medium

Height

Title

Price

Width

Medium

Height

Title

Price

Width

Medium

Height

When can you sit with art*

(If unable to sit 1 shift, please include \$10 fee)

Date

Time

While all reasonable effort will be made to protect works of art, neither GVAL, The Gilbert Historical Museum, nor their representatives, will be held liable for any damages, loss, theft, or injury which may occur during any/all activities. GVAL reserves the right to refuse any/all work. Signing this release means you approve of the use of your artwork for GVAL publications and promotional material. Furthermore, the above-mentioned parties will NOT be responsible for damages or lost submission materials. I hereby agree to these terms.

Signature

Date